



High speed Miquis Video Plus

The Miqus Video Plus (+) is the native video camera for any Qualisys motion capture camera system, capable of streaming synchronized, high quality video at fast capture rates for either markerless or marker-based setups.

SPEED

The upgraded Miqus Video Plus offers 40% faster speed than the previous model. Equipped with a parallel on-board MJPEG encoder, it seamlessly streams Full HD 1080p video at 120 fps or 720p at 480 fps if speed is preferred to image resolution.

QUALITY AND RESOLUTION

With the latest image sensor and strong low-light performance, image quality noticeably performs at high frame rates. At 2.8MP, it delivers 30% higher resolution than standard Full HD cameras.

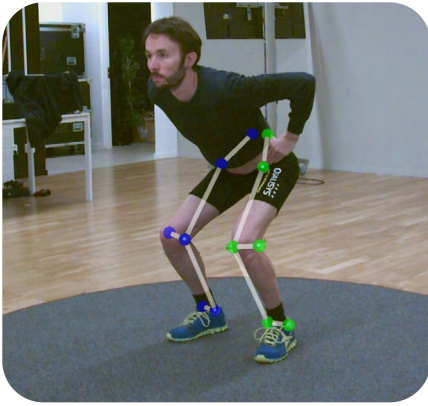
MARKERLESS MOTION CAPTURE

Miquis Video Plus is ideal for markerless capture with multi-camera support, precise time sync, integrated calibration, and direct streaming of compressed video for instant skeleton processing.

KEY FEATURES

- High-quality color video
- Daisy chained connection
- Full resolution 2.8 MP, 1920 x 1440
- Streams full HD at 120 fps
- Streams 720p at 480 fps
- Synchronized 3D data overlay
- Run standalone or together with any Qualisys mocap system





3D data overlay

As a single calibrated mocap system, 3D data can be visually aligned and laid over the video capture.



Markerless

Built to smoothly integrate with end-to-end markerless motion capture solutions.



Real-time streaming

Encoded video is streamed directly to the disc, eliminating the need for software re-encoding before use.

TECHNICAL SPECIFICATIONS

Strobe	White high-power LEDs
On-board compression	Yes, MJPEG
Synchronization	Automatic with Miquis and Arqus cameras; used with camera sync unit for external sync
Connection	1-connector daisy-chained Gigabit Ethernet and power
Operating temperature	0-35 °C
Camera body	140 × 87 × 84 mm (5.5 × 3.3 × 3.3 inches) Weight: ~ 0.7 kg (1.54 lbs)
Anti-theft	Kensington lock
Lens mount	C
Field of View	Standard 51° x 40°
	Narrow 40° x 30°
	Wide 72° x 57°

MIQUS VIDEO PLUS

Output Mode	Resolution	Pixel Resolution ¹	Aspect Ratio	Capture Rate
Full Resolution / 2.8 MP	1440p	1920 × 1440	4:3	100 fps
			1:1	120 fps
Full HD / 2 MP	1080p	1920 × 1080	16:9	120 fps
			4:3	160 fps
			1:1	180 fps
HD / 1 MP	720p	960 × 720	4:3	400 fps
			1:1	480 fps
0.5 MP	540p	960 × 540	16:9	440 fps
			4:3	480 fps
			1:1	480 fps

¹ Refers to the largest (top) aspect ratio for each mode.